

Goat Anti-Human IgG H+L antibody {Unconjugated} (STJS001214)

GENERAL INFORMATION

Product Type	Secondary antibodies
Applications	WB
Host / Source	Goat
Reactivity	Human

PRODUCT PROPERTIES

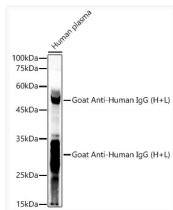
Clonality	Polyclonal
Concentration	Lot specific
Conjugation	Unconjugated
Purification	Affinity purification
Dilution Range	WB:1:500-1:1000
Formulation	PBS with 0.09% Sodium Azide, 50% Glycerol, pH7.3.
Isotype	IgG
Molecular Weight	25kDa (Light chain) , 55kDa (Heavy chain)
Storage Instruction	Store at -20°C for up to 1 year from the date of receipt, and avoid repeat freeze-thaw cycles.

TARGET INFORMATION

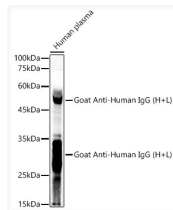
Specificity	Human IgG
-------------	-----------

ADDITIONAL INFORMATION

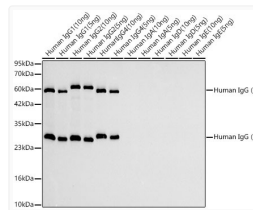
Note **STRICTLY FOR FURTHER SCIENTIFIC RESEARCH USE ONLY (RUO). MUST NOT TO BE USED IN DIAGNOSTIC OR THERAPEUTIC APPLICATIONS.**



Western blot analysis of lysates from Human plasma, using Goat Anti-Human IgG (H+L) (STJS001214) at 1:1000 dilution.
Secondary antibody: HRP Donkey Anti-Goat IgG (H+L) (AS031) at 1:4000 dilution.
Lysates/proteins: 25 Mu g per lane.
Blocking buffer: 3% nonfat dry milk in TBST.
Detection: ECL Basic Kit
Exposure time: 10s.



Western blot analysis of lysates from Human plasma, using Goat Anti-Human IgG (H+L) (STJS001214) at 1:1000 dilution.
Secondary antibody: HRP Donkey Anti-Goat IgG (H+L) (AS031) at 1:4000 dilution.
Lysates/proteins: 25 Mu g per lane.
Blocking buffer: 3% nonfat dry milk in TBST.
Detection: ECL Basic Kit
Exposure time: 10s.



Western blot analysis of lysates from Human IgG using Goat Anti-Human IgG (H+L) (STJS000853) at 1:5000 dilution.
Lysates/proteins: 5ng- 10ng per lane.
Blocking buffer: 3% nonfat dry milk in TBST.
Detection: ECL Basic Kit
Exposure time: 10s.