

Mouse Anti-Rabbit IgG H+L antibody {HRP} (STJS001212)

GENERAL INFORMATION

| | |
|---------------|----------------------|
| Product Type | Secondary antibodies |
| Applications | WB |
| Host / Source | Mouse |
| Reactivity | Rabbit |

PRODUCT PROPERTIES

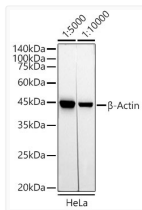
| | |
|---------------------|------------------------------------------------------------------------------------------------|
| Clonality | Monoclonal |
| Concentration | Lot specific |
| Conjugation | HRP |
| Purification | Affinity purification |
| Dilution Range | WB:1:5000-1:20000 |
| Formulation | PBS with 0.75% BSA, 50% Glycerol, pH 7.3. |
| Isotype | IgG |
| Molecular Weight | 36kDa |
| Storage Instruction | Store at -20°C for up to 1 year from the date of receipt, and avoid repeat freeze-thaw cycles. |

TARGET INFORMATION

| | |
|-------------|------------|
| Specificity | Rabbit IgG |
|-------------|------------|

ADDITIONAL INFORMATION

Note **STRICTLY FOR FURTHER SCIENTIFIC RESEARCH USE ONLY (RUO). MUST NOT TO BE USED IN DIAGNOSTIC OR THERAPEUTIC APPLICATIONS.**



Western blot analysis of lysates from HeLa cells, using Beta-Actin (STJ113532) antibody as the primary antibody at dilution of 1:10000. Secondary antibody: using HRP-conjugated AffiniPure Mouse Anti-Rabbit IgG (H+L) antibody (STJS001212) at 1:5000-1:10000 dilution.