

Goat Anti-Rabbit IgG H+L antibody {ABflo® 750} (STJS001205)

GENERAL INFORMATION

Product Type	Secondary antibodies
Applications	IF/ICC/FC
Host / Source	Goat
Reactivity	Rabbit

PRODUCT PROPERTIES

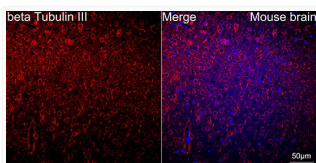
Clonality	Polyclonal
Concentration	Lot specific
Conjugation	ABflo® 750
Purification	Affinity purification
Dilution Range	IF/ICC:1:500-1:1000 FC:1:500-1:2000
Formulation	PBS with 0.02% Sodium Azide, 50% Glycerol, pH 7.3.
Isotype	IgG
Storage Instruction	Store at -20°C for up to 1 year from the date of receipt, and avoid repeat freeze-thaw cycles.

TARGET INFORMATION

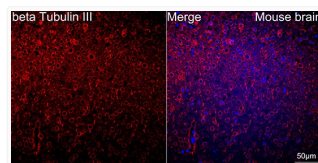
Specificity	Rabbit IgG
-------------	------------

ADDITIONAL INFORMATION

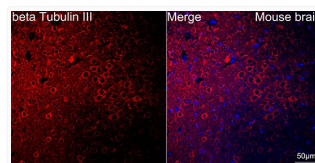
Note **STRICTLY FOR FURTHER SCIENTIFIC RESEARCH USE ONLY (RUO). MUST NOT TO BE USED IN DIAGNOSTIC OR THERAPEUTIC APPLICATIONS.**



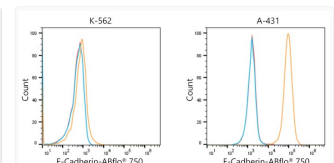
Confocal imaging of paraffin-embedded Mouse brain using Beta III-Tubulin Rabbit mAb (STJ1111133, dilution 1:200) followed by a further incubation with ABflo® 750-conjugated Goat Anti-Rabbit IgG (H+L) (STJS001205, dilution 1:500) (Red). DAPI was used for nuclear staining (Blue). Objective: 40x. Perform high pressure antigen retrieval with 0.01M citrate buffer (pH 6.0) prior to IF staining.



Confocal imaging of paraffin-embedded Mouse brain using PIII-Tubulin Rabbit mAb (STJ1111133, dilution 1:200) followed by a further incubation with ABflo® 750-conjugated Goat Anti-Rabbit IgG (H+L) (STJS001205, dilution 1:500) (Red). DAPI was used for nuclear staining (Blue). Objective: 40x. Perform high pressure antigen retrieval with 0.01M citrate buffer (pH 6.0) prior to IF staining.



Confocal imaging of paraffin-embedded Mouse brain using PIII-Tubulin Rabbit mAb (STJ1111133, dilution 1:200) followed by a further incubation with ABflo® 750-conjugated Goat Anti-Rabbit IgG (H+L) (STJS001205, dilution 1:1000) (Red). DAPI was used for nuclear staining (Blue). Objective: 40x. Perform high pressure antigen retrieval with 0.01M citrate buffer (pH 6.0) prior to IF staining.



Flow cytometric analysis of Positive antibody E-Cadherin Rabbit mAb (2.5 µg/mL) in various cells (orange) compare to Rabbit rabbit isotype control (blue) and non-staining control (Red). The secondary antibody used was ABflo® 750-conjugated Goat Anti-Rabbit IgG (H+L) (STJS001205) at 1:100.