

## Goat Anti-Mouse IgG H+L antibody {ABflo® 647} (STJS001195)

### GENERAL INFORMATION

Product Type	Secondary antibodies
Applications	IF/ICC/FC
Host / Source	Goat
Reactivity	Mouse

### PRODUCT PROPERTIES

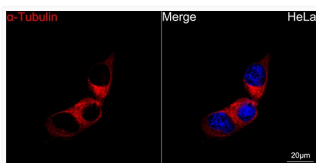
Clonality	Polyclonal
Concentration	Lot specific
Conjugation	ABflo® 647
Purification	Affinity purification
Dilution Range	IF/ICC:1:100-1:500 FC:1:50-1:100
Formulation	PBS with 0.02% Sodium Azide, 1% BSA, 50% Glycerol, pH 7.3.
Isotype	IgG
Storage Instruction	Store at -20°C for up to 1 year from the date of receipt, and avoid repeat freeze-thaw cycles.

### TARGET INFORMATION

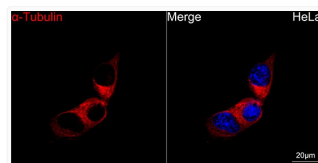
Specificity	Mouse IgG
-------------	-----------

### ADDITIONAL INFORMATION

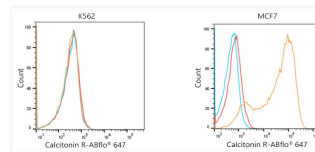
Note **STRICTLY FOR FURTHER SCIENTIFIC RESEARCH USE ONLY (RUO). MUST NOT TO BE USED IN DIAGNOSTIC OR THERAPEUTIC APPLICATIONS.**



Confocal imaging of HeLa cells using Alpha-Tubulin Mouse mAb (STJ11107556, dilution 1:400) followed by a further incubation with ABflo® 647-conjugated Goat Anti-Mouse IgG (H+L) (STJS001195, dilution 1:200) (Red). DAPI was used for nuclear staining (Blue). Objective: 100x.



Confocal imaging of HeLa cells using  $\alpha$ -Tubulin Mouse mAb (STJ11107556, dilution 1:400) followed by a further incubation with ABflo® 647-conjugated Goat Anti-Mouse IgG (H+L) (STJS001195, dilution 1:200) (Red). DAPI was used for nuclear staining (Blue). Objective: 100x.



Flow cytometric analysis of Positive antibody Human Calcitonin R (2.5  $\mu$ g/mL) in various cells (orange) compare to Mouse isotype control (blue) and non-staining control (Red). The secondary antibody used was ABflo® 647-conjugated Goat Anti-Mouse IgG (H+L) (STJS001195) at 1:100.