

Human CRABP2 protein (Recombinant) (No-Tag) (STJP019750)

GENERAL INFORMATION

Product Type	Proteins
Applications	SDS-PAGE
Host / Source	E.coli

PRODUCT PROPERTIES

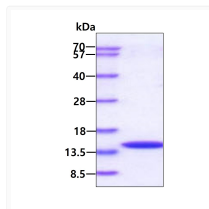
Concentration	1 mg/mL
Formulation	Liquid in 20mM Tris-HCl buffer (pH 8.0) containing 20% Glycerol
Molecular Weight	15.6 kDa
Storage Instruction	For short term storage, keep at +2C to +8C for up to 1 week. For long term storage, aliquot and store at -20C, and avoid repeat freeze-thaw cycles.

TARGET INFORMATION

Gene ID	1382
Gene Symbol	CRABP2
UniProt ID	RABP2_HUMAN
Immunogen Region	1-138aa
Immunogen Sequence	MPNFSGNWKI IRSENFELL KVLGVNMLR KIAVAAASKP AVEIKQEGDT FYIKTSTTVR TTEINFKVGGE EFEEQTVDGR PCKSLVKWES ENKMVCEQKL LKGEGPKTSW TRELNDGEL ILTMTADDVV CTRVYVRE

ADDITIONAL INFORMATION

Note	STRICTLY FOR FURTHER SCIENTIFIC RESEARCH USE ONLY (RUO). MUST NOT TO BE USED IN DIAGNOSTIC OR THERAPEUTIC APPLICATIONS.
------	---



SDS-PAGE gel of recombinant human CRABP2 protein 3µg reducing conditions Coomassie stain