

Human Cyclophilin-like 1/PPIL1 protein (Recombinant) (His-Tag) (STJP019734)

GENERAL INFORMATION

Product Type	Proteins
Applications	SDS-PAGE/Enzyme Activity
Host / Source	E.coli

PRODUCT PROPERTIES

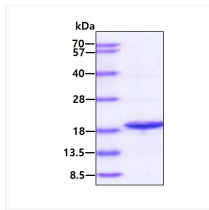
Concentration	1 mg/mL
Formulation	Liquid in 20mM Tris-HCl buffer (pH 8.0) containing 20% Glycerol
Molecular Weight	19.3 kDa
Storage Instruction	For short term storage, keep at +2C to +8C for up to 1 week. For long term storage, aliquot and store at -20C, and avoid repeat freeze-thaw cycles.

TARGET INFORMATION

Gene ID	51645
Gene Symbol	PPIL1
UniProt ID	PPIL1_HUMAN
Immunogen Region	1-166aa
Immunogen Sequence	MAAIPDWSWQ PPNVYLETSM GIIVLELYWK HAPKTCKNFA ELARRGYNYG TKFHRIIKDF MIQGGDPTGT GRGGASIIYGK QFEDELHPDL KFTGAGILAM ANAGPDTNGS QFFVTLAPTQ WLDGKHTIFG RVCQGIGMVN RVGMVETNSQ DRPVDDVKII KAYPSG

ADDITIONAL INFORMATION

Note STRICTLY FOR FURTHER SCIENTIFIC RESEARCH USE ONLY (RUO). MUST NOT TO BE USED IN DIAGNOSTIC OR THERAPEUTIC APPLICATIONS.



SDS-PAGE gel showing 3µg recombinant human Cyclophilin-like 1 PPIL1 protein under reducing conditions Coomassie blue stain