

Human ISG15 protein (Recombinant) (Calmodulin Tag) (STJP019691)

GENERAL INFORMATION

Product Type	Proteins
Applications	SDS-PAGE
Host / Source	E.coli

PRODUCT PROPERTIES

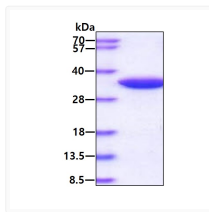
Concentration	1 mg/mL
Formulation	Liquid in 20mM Tris-HCl buffer (pH 8.0) containing 0.1M NaCl, 1mM DTT
Molecular Weight	34 kDa
Storage Instruction	For short term storage, keep at +2C to +8C for up to 1 week. For long term storage, aliquot and store at -20C, and avoid repeat freeze-thaw cycles.

TARGET INFORMATION

Gene ID	9636
Gene Symbol	ISG15
UniProt ID	ISG15_HUMAN
Immunogen Region	1-157aa
Immunogen Sequence	MGWDLTVKM LAGNEFQVSL SSSMSVSELK AQITQKIGVH AFQQRRLAVHP SGVALQDRVP LASQGLGPGS TVLLLV

ADDITIONAL INFORMATION

Note **STRICTLY FOR FURTHER SCIENTIFIC RESEARCH USE ONLY (RUO). MUST NOT TO BE USED IN DIAGNOSTIC OR THERAPEUTIC APPLICATIONS.**



SDS-PAGE gel of recombinant human ISG15 protein 3µg under reducing conditions Coomassie blue stain