

Human HIF-1 alpha/HIF1A protein (Recombinant) (No-Tag) (STJP019649)

GENERAL INFORMATION

Product Type	Proteins
Applications	SDS-PAGE
Host / Source	E.coli

PRODUCT PROPERTIES

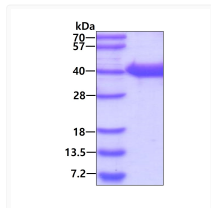
Concentration	1 mg/mL
Formulation	Liquid in phosphate-Buffered Saline (pH 7.4) containing 10% Glycerol
Molecular Weight	32.8 kDa
Storage Instruction	For short term storage, keep at +2C to +8C for up to 1 week. For long term storage, aliquot and store at -20C, and avoid repeat freeze-thaw cycles.

TARGET INFORMATION

Gene ID	3091
Gene Symbol	HIF1A
UniProt ID	HIF1A_HUMAN
Immunogen Region	530-826aa
Immunogen Sequence	MEFKLELVEK LFAEDTEAKN PFSTQDLD LEMLPYIPM DDDFQLRSFD QLSPLESSA SPESASPQST VTFVQQTQIQ EPTANATTTT ATTDELKTVT KDRMEDIKIL IASPSPTIHH KETTSATSSP YRDTQSRAS PNRAGKGVIE QTEKSHPRSP NVLSVALSQR TTVPEEELNP KILALQNAQR KRKMEHDGSL FQAVGIGTLL QPDDHAATT SLSWKRVK

ADDITIONAL INFORMATION

Note STRICTLY FOR FURTHER SCIENTIFIC RESEARCH USE ONLY (RUO). MUST NOT TO BE USED IN DIAGNOSTIC OR THERAPEUTIC APPLICATIONS.



SDS-PAGE gel showing 3µg recombinant human HIF-1 alpha protein under reducing conditions
Coomassie blue stain