

## Human Alkaline Phosphatase/ALPL protein (Recombinant) (His-Tag) (STJP019539)

### GENERAL INFORMATION

Product Type	Proteins
Applications	SDS-PAGE/Enzyme Activity
Host / Source	HEK293 Cells

### PRODUCT PROPERTIES

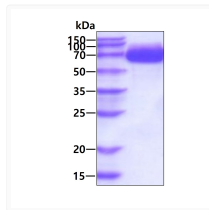
Concentration	1 mg/mL
Formulation	Liquid in phosphate-Buffered Saline (pH 7.4) containing 10% Glycerol
Molecular Weight	54.3kDa
Storage Instruction	For short term storage, keep at +2C to +8C for up to 1 week. For long term storage, aliquot and store at -20C, and avoid repeat freeze-thaw cycles.

### TARGET INFORMATION

Gene ID	<a href="#">249</a>
Gene Symbol	<a href="#">ALPL</a>
UniProt ID	<a href="#">PPBT_HUMAN</a>
Immunogen Region	18-501aa
Immunogen Sequence	LVPEKEK DPKYWRDQAQ ETLKYALELQ KLNTNVAKNV IMFLGDGMGV STVTAARILK GQLHHNPGEE TRLEMDKFPF VALSKTYNTN AQVPDSAGTA TAYLCGVKAN EGTVGVSAAT ERSRCNTTQG NEVTSILRWA KDAGKSVGIV TTTRVNHATP SAAYHSADR DWYSDNEMPP EALSQGCKDI AYQLMHNIRD IDVIMGGGRK YMPKKNKTDV EYESDE

### ADDITIONAL INFORMATION

Note STRICTLY FOR FURTHER SCIENTIFIC RESEARCH USE ONLY (RUO). MUST NOT TO BE USED IN DIAGNOSTIC OR THERAPEUTIC APPLICATIONS.



SDS-PAGE gel of recombinant human Alkaline Phosphatase ALPL protein under reducing conditions