

## Human CD4 protein (Recombinant) (hIgG-His-Tag) (STJP019528)

### GENERAL INFORMATION

Product Type	Proteins
Applications	SDS-PAGE/Bioactivity
Host / Source	HEK293 Cells

### PRODUCT PROPERTIES

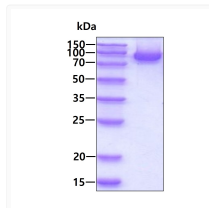
Concentration	0.25 mg/mL
Formulation	Liquid in phosphate-Buffered Saline (pH 7.4) containing 40% Glycerol
Molecular Weight	67.7kDa
Storage Instruction	For short term storage, keep at +2C to +8C for up to 1 week. For long term storage, aliquot and store at -20C, and avoid repeat freeze-thaw cycles.

### TARGET INFORMATION

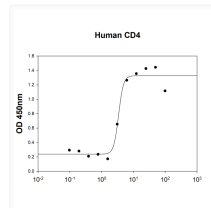
Gene ID	<a href="#">920</a>
Gene Symbol	<a href="#">CD4</a>
UniProt ID	<a href="#">CD4_HUMAN</a>
Immunogen Region	26-390aa
Immunogen Sequence	KKVVLGKKGD TVELTCTASQ KKSIFHWKN SNQIKILGNQ GSFLTkgPSK LNDRADSRRS LWDQGNFPLI IKNLKIEDSD TYICEVEDQK EEVQLLVFGL TANSDTHLLQ GQSLTLTLES PPGSSPSVQC RSPRGKNIQG GKTLSSVQLE LQDSGTWTCT VLQNQKKVEF KIDIVVLAfq KASSIVYKKE GEQVEFSFPL AFTVEKLTGS GELWWQAERA SSSKSWIT

### ADDITIONAL INFORMATION

Note STRICTLY FOR FURTHER SCIENTIFIC RESEARCH USE ONLY (RUO). MUST NOT TO BE USED IN DIAGNOSTIC OR THERAPEUTIC APPLICATIONS.



SDS-PAGE of recombinant human CD4 protein 3µg under reducing conditions Coomassie blue stain



Human CD4 protein stimulates HeLa cell adhesion with ED50  $\leq 10 \mu\text{g/ml}$