

Human Cathepsin D protein (Recombinant) (His-Tag) (STJP019511)

GENERAL INFORMATION

Product Type	Proteins
Applications	SDS-PAGE/Enzyme Activity
Host / Source	HEK293 Cells

PRODUCT PROPERTIES

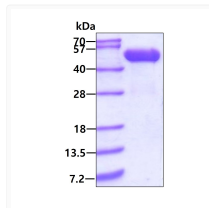
Concentration	1 mg/mL
Formulation	Liquid in 50mM MES buffer (pH 5.5) containing 100mM NaCl, 20% Glycerol.
Molecular Weight	43.4 kDa
Storage Instruction	For short term storage, keep at +2C to +8C for up to 1 week. For long term storage, aliquot and store at -20C, and avoid repeat freeze-thaw cycles.

TARGET INFORMATION

Gene ID	1509
Gene Symbol	CTSD
UniProt ID	CATD_HUMAN
Immunogen Region	21-412aa
Immunogen Sequence	LVRIPLHKFT SIRRTMSEVG GSVEDLIKAG PVSKEYSQAVP AVTEGPIPEV LKNYMDAQYY GEIGIGTPPQ CFTVVFDTGS SNLWVPSIHC KLLDIACWIH HKYNSDKSST YVKNGTSEFDI HYGSGSLSGY LSQDTVSVPC QSASSASALG GVKVERQVFG EATKQPGITF IAAKFDGILG MAYPRISVNN VLPVFDNLMQ QKLVDQNIFS FYLSRDPDAQ PGGELMLG

ADDITIONAL INFORMATION

Note STRICTLY FOR FURTHER SCIENTIFIC RESEARCH USE ONLY (RUO). MUST NOT TO BE USED IN DIAGNOSTIC OR THERAPEUTIC APPLICATIONS.



Recombinant Human Cathepsin D protein SDS-PAGE gel under reducing conditions Coomassie blue stain