

Human CCL2/MCP-1 protein (Recombinant) (His-Tag) (STJP019498)

GENERAL INFORMATION

Product Type	Proteins
Applications	SDS-PAGE/Bioactivity
Host / Source	HEK293 Cells

PRODUCT PROPERTIES

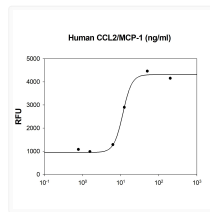
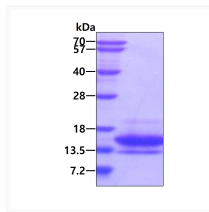
Concentration	0.25 mg/mL
Formulation	Liquid In Phosphate-Buffered Saline (pH 7.4) containing 10% Glycerol
Molecular Weight	9.5kDa
Storage Instruction	For short term storage, keep at +2C to +8C for up to 1 week. For long term storage, aliquot and store at -20C, and avoid repeat freeze-thaw cycles.

TARGET INFORMATION

Gene ID	6347
Gene Symbol	CCL2
UniProt ID	CCL2_HUMAN
Immunogen Region	24-99aa
Immunogen Sequence	QPDAINAPVT CCYNFTNRKI SVQRLASYRR ITSSKCPKEA VIFKTIVAKE ICADPKQKWV QDSMDHLDKQ TQTPKT

ADDITIONAL INFORMATION

Note **STRICTLY FOR FURTHER SCIENTIFIC RESEARCH USE ONLY (RUO). MUST NOT TO BE USED IN DIAGNOSTIC OR THERAPEUTIC APPLICATIONS.**



SDS-PAGE gel showing recombinant human CCL2 MCP-1 protein 3µg under reducing conditions Coomassie blue stain

Human CCL2 MCP-1 protein chemotaxis assay showing THP-1 monocytic leukemia cell migration