

Human LBP protein (Recombinant) (His-Tag) (STJP019454)

GENERAL INFORMATION

Product Type	Proteins
Applications	SDS-PAGE
Host / Source	HEK293 Cells

PRODUCT PROPERTIES

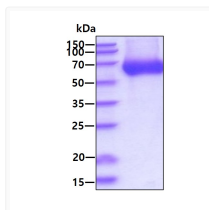
Concentration	0.25 mg/mL
Formulation	Liquid In Phosphate-Buffered Saline (pH 7.4) containing 10% Glycerol
Molecular Weight	51.7kDa
Storage Instruction	For short term storage, keep at +2C to +8C for up to 1 week. For long term storage, aliquot and store at -20C, and avoid repeat freeze-thaw cycles.

TARGET INFORMATION

Gene ID	3929
Gene Symbol	LBP
UniProt ID	LBP_HUMAN
Immunogen Region	26-481aa
Immunogen Sequence	ANPGLVARIT DKGLQYAAQE GLLALQSELL RITLPDFTGD LRIPHVGRGR YEFHSLNIHS CELLHSALRP VPGQGLSLSI SDSSIRVQGR WKVRKSFFKL QGSFDVSVKG ISISVNLLLG SESSGRPTVT ASSCSDIAD VEVDMSGDLG WLLNLFHNQI ESKFQKVLES RICEMIQKSV SSDLQPYLQT LPVTTEIDSF ADIDYSLVEA PRATAQMLEV MFKGEIFH

ADDITIONAL INFORMATION

Note STRICTLY FOR FURTHER SCIENTIFIC RESEARCH USE ONLY (RUO). MUST NOT TO BE USED IN DIAGNOSTIC OR THERAPEUTIC APPLICATIONS.



SDS-PAGE gel of recombinant human LBP protein 3 µg under reducing conditions
Coomassie blue stain