

Human ACE-2 protein (Recombinant) (hIgG-His-Tag) (STJP019441)

GENERAL INFORMATION

Product Type	Proteins
Applications	SDS-PAGE/Enzyme Activity/Bioactivity
Host / Source	HEK293 Cells

PRODUCT PROPERTIES

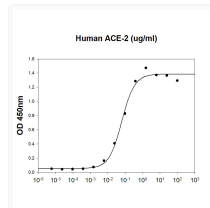
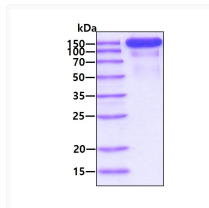
Concentration	0.5 mg/mL
Formulation	Liquid In Phosphate-Buffered Saline (pH 7.4) containing 10% Glycerol
Molecular Weight	110.8kDa
Storage Instruction	For short term storage, keep at +2C to +8C for up to 1 week. For long term storage, aliquot and store at -20C, and avoid repeat freeze-thaw cycles.

TARGET INFORMATION

Gene ID	59272
Gene Symbol	ACE2
UniProt ID	ACE2_HUMAN
Immunogen Region	18-740aa
Immunogen Sequence	QSTIEEQ AKTFLDKFNH EAEDLFYQSS LASWNYNTNI TEENVQNMNN AGDKWSAFLK EQSTLAQMYP LQEIQNLTVK LQLQALQQNG SSVLSEDKSK RLNTILNTMS TIYSTGKVCN PDNPQECLLL EPGLNEIMAN SLDYNERLWA WESWRSEVGK QLRPLYEEYV VLKNEMARAN HYEDYGDYWR GDYEVNGVDG YDYSRGLIE DVEHTFEEIK PLYEHL

ADDITIONAL INFORMATION

Note STRICTLY FOR FURTHER SCIENTIFIC RESEARCH USE ONLY (RUO). MUST NOT TO BE USED IN DIAGNOSTIC OR THERAPEUTIC APPLICATIONS.



Recombinant human ACE-2 protein SDS-PAGE gel under reducing conditions stained with Coomassie blue

SARS-CoV-2 Spike RBD binding to recombinant human ACE-2 protein with ED50 \leq 100ng/ml