

canine IL-1 beta/IL1B protein (Recombinant) (No-Tag) (STJP019438)

GENERAL INFORMATION

Product Type	Proteins
Applications	SDS-PAGE/Bioactivity
Host / Source	E.coli

PRODUCT PROPERTIES

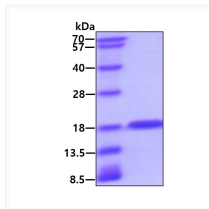
Concentration	1 mg/mL
Formulation	Liquid in phosphate-Buffered Saline (pH 7.4)
Molecular Weight	17.5 kDa
Storage Instruction	For short term storage, keep at +2C to +8C for up to 1 week. For long term storage, aliquot and store at -20C, and avoid repeat freeze-thaw cycles.

TARGET INFORMATION

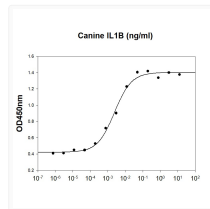
Immunogen Region	114-265aa
Immunogen Sequence	MAAMQSVDCCK LQDISHKYL VLSNSYELRAL HLNGENVNKQ VVFHMSFVHG DESNNKIPVV LGIKQKNLYL SCVMKDGKPT LQLEKVDPKV YPKRKMKEKRF VFNKIEIKNT VEFESSQYPN WYISTSQVEG MPVFLGNTRG QDITDFTME FSS

ADDITIONAL INFORMATION

Note **STRICTLY FOR FURTHER SCIENTIFIC RESEARCH USE ONLY (RUO). MUST NOT TO BE USED IN DIAGNOSTIC OR THERAPEUTIC APPLICATIONS.**



SDS-PAGE of recombinant canine IL-1 beta protein under reducing conditions Coomassie blue stain



Canine IL-1 beta biological activity assay showing D10.G4.1 T cell proliferation stimulation