

Human Glutamine synthetase/GLUL protein (Recombinant) (His-Tag) (STJP019292)

GENERAL INFORMATION

Product Type	Proteins
Applications	SDS-PAGE/Enzyme Activity
Host / Source	E.coli

PRODUCT PROPERTIES

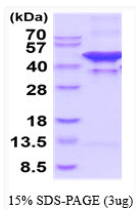
Concentration	1 mg/mL
Formulation	Liquid in 20mM Tris-HCl buffer (pH 8.0) containing 20% Glycerol, 5mM DTT, 200mM NaCl
Molecular Weight	44.2 kDa
Storage Instruction	For short term storage, keep at +2C to +8C for up to 1 week. For long term storage, aliquot and store at -20C, and avoid repeat freeze-thaw cycles.

TARGET INFORMATION

Gene ID	2752
Gene Symbol	GLUL
UniProt ID	GLNA_HUMAN
Immunogen Region	1-373aa
Immunogen Sequence	MGSSHHHHHH SSGLVPRGSH MTTSSASSHLN KGIKQVYMSL PQGEKVQAMY IWIDGTGEGL RCKTRTLTSE PKCVEELPEW NFDGSSTLQS EGSNSDMYLV PAAMFRDPFR KDPNKLVLCE VFKYNRRPAE TNLRHITCKRI MDMVSNQHPW FGMEQEYTLM GTDGHPPFGWP SNGFPGPQGP YYCGVGADRA YGRDIVEAHY RACLYAGVKI AGTNAEVMPA QWEFQIGP

ADDITIONAL INFORMATION

Note STRICTLY FOR FURTHER SCIENTIFIC RESEARCH USE ONLY (RUO). MUST NOT TO BE USED IN DIAGNOSTIC OR THERAPEUTIC APPLICATIONS.



SDS-PAGE gel showing recombinant human glutamine synthetase GLUL protein at 3µg under reducing conditions