

Human Cystatin E/M protein (Recombinant) (His-Tag) (STJP019258)

GENERAL INFORMATION

| | |
|---------------|--------------------------|
| Product Type | Proteins |
| Applications | SDS-PAGE/Enzyme Activity |
| Host / Source | E.coli |

PRODUCT PROPERTIES

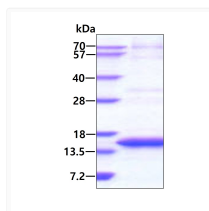
| | |
|---------------------|---|
| Concentration | 0.5 mg/mL |
| Formulation | Liquid in 20mM Tris-HCl buffer (pH 8.0) containing 10% Glycerol, 1mM DTT, 0.1M NaCl. |
| Molecular Weight | 15.9 kDa |
| Storage Instruction | For short term storage, keep at +2C to +8C for up to 1 week. For long term storage, aliquot and store at -20C, and avoid repeat freeze-thaw cycles. |

TARGET INFORMATION

| | |
|--------------------|--|
| Gene ID | 1474 |
| Gene Symbol | CST6 |
| UniProt ID | CYTM_HUMAN |
| Immunogen Region | 29-149aa |
| Immunogen Sequence | RPQERMVGE LRDLSPPDPQ VQKAAQAAVA SYNMGNSNIY YFRDTHIIKA QSQLVAGIKY FLTMEMGSTD CRKTRVTGDH VDLTTCP LAA GAQKEKLRCD FEVLVVPWQN SSQLLKHNCV QM |

ADDITIONAL INFORMATION

Note STRICTLY FOR FURTHER SCIENTIFIC RESEARCH USE ONLY (RUO). MUST NOT TO BE USED IN DIAGNOSTIC OR THERAPEUTIC APPLICATIONS.



SDS-PAGE gel of recombinant human Cystatin E/M protein under reducing conditions. Coomassie blue stain.