

## Human PP2A alpha/PPP2R1A protein (Recombinant) (His-Tag) (STJP019216)

### GENERAL INFORMATION

Product Type	Proteins
Applications	SDS-PAGE
Host / Source	E.coli

### PRODUCT PROPERTIES

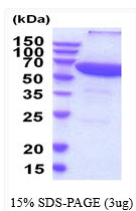
Concentration	1 mg/mL
Formulation	Liquid in phosphate-Buffered Saline (pH 7.4) containing 10% Glycerol
Molecular Weight	67.7 kDa
Storage Instruction	For short term storage, keep at +2C to +8C for up to 1 week. For long term storage, aliquot and store at -20C, and avoid repeat freeze-thaw cycles.

### TARGET INFORMATION

Gene ID	<a href="#">5518</a>
Gene Symbol	<a href="#">PPP2R1A</a>
UniProt ID	<a href="#">2AAA_HUMAN</a>
Immunogen Region	1-589aa
Immunogen Sequence	MAAADGD DSLYPIAVLI DELRNEDVQL RLNSIKKLST IALALGVERT RSELLPFLTD TIYDEDEVLL ALAEQLGTFT TLVGGPEYVH CLLPPLES LA TVEETVVRDK AVESLRAISH EHSPSDLEAH FVPLVKRLAG GDWFTSRTSA CGLFSVCYPR VSSAVKAE LR QYFRNLCSDD TPMVRRRAAS KLGEFAKVLE LDNVKS

### ADDITIONAL INFORMATION

Note STRICTLY FOR FURTHER SCIENTIFIC RESEARCH USE ONLY (RUO). MUST NOT TO BE USED IN DIAGNOSTIC OR THERAPEUTIC APPLICATIONS.



SDS-PAGE of recombinant human PP2A alpha PPP2R1A protein under reducing conditions