

Mouse SOD2/Mn-SOD protein (Recombinant) (His-Tag) (STJP019156)

GENERAL INFORMATION

Product Type	Proteins
Applications	SDS-PAGE
Host / Source	E.coli

PRODUCT PROPERTIES

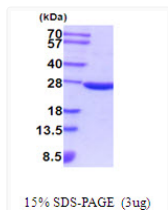
Concentration	1 mg/mL
Formulation	Liquid in phosphate-Buffered Saline (pH 7.4) containing 10% Glycerol, 1mM DTT
Molecular Weight	24.6 kDa
Storage Instruction	For short term storage, keep at +2C to +8C for up to 1 week. For long term storage, aliquot and store at -20C, and avoid repeat freeze-thaw cycles.

TARGET INFORMATION

Gene ID	20656
Gene Symbol	Sod2
UniProt ID	SODM_MOUSE
Immunogen Region	25-222aa
Immunogen Sequence	MGSSHHHHHH SSGLVPRGSH MGSKHSLPDL PYDYGALPH INAQIMQLHH SKHHAAYVNN LNATEEKYHE ALAKGDVTTQ VALQPALKFN GGGHINTIF WTNLSPKGGG EPKGELLEAI KRDFGSFEKF KEKLTAVSVG VQSGGWGLG FNKEQGR LQI AACSNQDPLQ GTTGLIPLLG IDVWEHAYYL QYKNVRPDYL KAIWNVINWE NVTERYTACK K

ADDITIONAL INFORMATION

Note STRICTLY FOR FURTHER SCIENTIFIC RESEARCH USE ONLY (RUO). MUST NOT TO BE USED IN DIAGNOSTIC OR THERAPEUTIC APPLICATIONS.



SDS-PAGE of recombinant mouse SOD2 Mn-SOD protein under reducing conditions