

Human PAFAH2 protein (Recombinant) (His-Tag) (STJP019128)

GENERAL INFORMATION

Product Type	Proteins
Applications	SDS-PAGE
Host / Source	E.coli

PRODUCT PROPERTIES

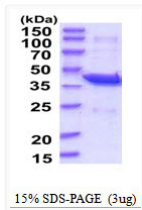
Concentration	1 mg/mL
Formulation	Liquid in phosphate-Buffered Saline (pH 7.4) containing 20% Glycerol, 1mM DTT
Molecular Weight	46.4 kDa
Storage Instruction	For short term storage, keep at +2C to +8C for up to 1 week. For long term storage, aliquot and store at-20C, and avoid repeat freeze-thaw cycles.

TARGET INFORMATION

Gene ID	5051
Gene Symbol	PAFAH2
UniProt ID	PAFA2_HUMAN
Immunogen Region	1-392aa
Immunogen Sequence	MGSSHHHHHH SSGLVPRGSH MGSMGVNQSIV GFPPVTGPHL VGCGDVMEGQ NLQGSFFRLF YPCQKAEETM EQPLWIPRYE YCTGLAEYLQ FNKRCGGLLF NLAVGSCRLP VSWNGPFKTK DSGYPLIIFS HGLGAFRTLY SAFCMELASR GFVVAVPEHR DRSAATTYFC KQAPEENQPT NESLQEEWIP FRRVEEKEKE FHVRNPQVHQ RVSECLRVLK ILQEVTAG

ADDITIONAL INFORMATION

Note STRICTLY FOR FURTHER SCIENTIFIC RESEARCH USE ONLY (RUO). MUST NOT TO BE USED IN DIAGNOSTIC OR THERAPEUTIC APPLICATIONS.



15% SDS-PAGE (3ug)

SDS-PAGE gel of recombinant human PAFAH2 protein under reducing conditions stained with Coomassie blue