

Human HSP20/HSPB6 protein (Recombinant) (His-Tag) (STJP019095)

GENERAL INFORMATION

Product Type	Proteins
Applications	SDS-PAGE
Host / Source	E.coli

PRODUCT PROPERTIES

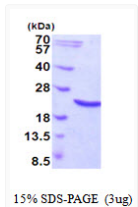
Concentration	0.25 mg/mL
Formulation	Liquid in phosphate-Buffered Saline (pH 7.4) containing 30% Glycerol, 1mM DTT, 1mM EDTA, 0.1mM PMSF
Molecular Weight	19.7 kDa
Storage Instruction	For short term storage, keep at +2C to +8C for up to 1 week. For long term storage, aliquot and store at -20C, and avoid repeat freeze-thaw cycles.

TARGET INFORMATION

Gene ID	126393
Gene Symbol	HSPB6
UniProt ID	HSPB6_HUMAN
Immunogen Region	1-160aa
Immunogen Sequence	MGSSHHHHHH SSSLVPRGSH MGSMEIPVP VQPSWLRRAS APLPGLSAPG RLFQDRFGEG LLEAELAALC PTTLAPYYLR APSVALPVAQ VPTDPGHFSV LLDVKHFSPE EIAVKVVGEGH VEVHARHEER PDEHGFVARE FHRRYRLPPG VDPAAVTSAL SPEGLVLSIQA APASQAQPPP AAK

ADDITIONAL INFORMATION

Note STRICTLY FOR FURTHER SCIENTIFIC RESEARCH USE ONLY (RUO). MUST NOT TO BE USED IN DIAGNOSTIC OR THERAPEUTIC APPLICATIONS.



15% SDS-PAGE (3µg)

SDS-PAGE gel of recombinant human HSP20/HSPB6 protein under reducing conditions