

Human Cathepsin L protein (Recombinant) (His-Tag) (STJP019076)

GENERAL INFORMATION

Product Type	Proteins
Applications	SDS-PAGE/Denatured
Host / Source	E.coli

PRODUCT PROPERTIES

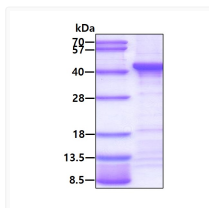
Concentration	1 mg/mL
Formulation	Liquid in 20mM Tris-HCl buffer (pH 8.0) containing 10% Glycerol
Molecular Weight	38.3 kDa
Storage Instruction	For short term storage, keep at +2C to +8C for up to 1 week. For long term storage, aliquot and store at -20C, and avoid repeat freeze-thaw cycles.

TARGET INFORMATION

Gene ID	1514
Gene Symbol	CTSL
UniProt ID	CATL1_HUMAN
Immunogen Region	18-333aa
Immunogen Sequence	TLTFDHS LEAQWTKWKA MHNRLYGMNE EGWRRRAVWEK NMKMIELHNQ EYREGKHSFT MAMNAFGDMT SEEFRQVMNG FQNRKPRKGG VFQEPLFYEA PRSVDWREKQ YVTPVKNQGG CGSCWAFSAT GALEGQMFVK TGRLLSLSEQ NLVDCSGPQG NEGCNGGLMD YAFQYVQDNG GLDSEESYPY EATEESCKYN PKYSVA

ADDITIONAL INFORMATION

Note STRICTLY FOR FURTHER SCIENTIFIC RESEARCH USE ONLY (RUO). MUST NOT TO BE USED IN DIAGNOSTIC OR THERAPEUTIC APPLICATIONS.



SDS-PAGE gel of recombinant human Cathepsin L protein under reducing conditions stained with Coomassie blue