

Human PU.1/SPI1 protein (Recombinant) (His-Tag) (STJP019057)

GENERAL INFORMATION

Product Type	Proteins
Applications	SDS-PAGE/Denatured
Host / Source	E.coli

PRODUCT PROPERTIES

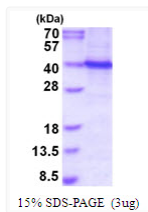
Concentration	0.25 mg/mL
Formulation	Liquid in 20mM Tris-HCl buffer (pH 8.0) containing 10% Glycerol
Molecular Weight	33.6 kDa
Storage Instruction	For short term storage, keep at +2C to +8C for up to 1 week. For long term storage, aliquot and store at -20C, and avoid repeat freeze-thaw cycles.

TARGET INFORMATION

Gene ID	6688
Gene Symbol	SPI1
UniProt ID	SPI1_HUMAN
Immunogen Region	1-271aa
Immunogen Sequence	MGSSHHHHHH SSGLVPRGSH MGSMLQACKM EGFPLVPPQP SEDLVPYDTD LYQRQTHEYY PYLSSDGGESH SDHYWDFHPP HVHSEFESFA ENNFTELQSV QPPQLQQLYR HMELEQMHL DTPMVPPHPS LGHQVSYLPR MCLQYPSLSP AQPSSDEEEG ERQSPPLEVS DGEADGLEPG PGLLPGETGS KKKIRLYQFL LDLLRSGDMK DSIWVVDKDK GTFQFSSK

ADDITIONAL INFORMATION

Note STRICTLY FOR FURTHER SCIENTIFIC RESEARCH USE ONLY (RUO). MUST NOT TO BE USED IN DIAGNOSTIC OR THERAPEUTIC APPLICATIONS.



SDS-PAGE gel of recombinant human PU.1 SPI1 protein under reducing conditions