

## Human ELAVL2 protein (Recombinant) (His-Tag) (STJP019015)

### GENERAL INFORMATION

Product Type	Proteins
Applications	SDS-PAGE
Host / Source	E.coli

### PRODUCT PROPERTIES

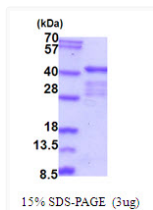
Concentration	0.5 mg/mL
Formulation	Liquid in phosphate-Buffered Saline (pH 7.4) containing 30% Glycerol, 1mM DTT
Molecular Weight	40.4 kDa
Storage Instruction	For short term storage, keep at +2C to +8C for up to 1 week. For long term storage, aliquot and store at -20C, and avoid repeat freeze-thaw cycles.

### TARGET INFORMATION

Gene ID	<a href="#">1993</a>
Gene Symbol	<a href="#">ELAVL2</a>
UniProt ID	<a href="#">ELAV2_HUMAN</a>
Immunogen Region	1-346aa
Immunogen Sequence	MGSSHHHHHH SSGLVPRGSH MGSMTQLSN GPTCNNTANG PTTINNNCSS PVDSGNTEDS KTNLIVNYLP QNMTQEELKS LFGSIGEIES CKLVRDKITG QSLGYGFVNY IDPKDAEKAI NTLNGLRLQT KTIKVSYARP SSASIRDANL YVSGLPKMT QKELEQLFSQ YGRIITSRIL VDQVTGISRG VGFIRFDKRI EAEAAIKGLN GQKPPGATEP ITVKFANN

### ADDITIONAL INFORMATION

Note STRICTLY FOR FURTHER SCIENTIFIC RESEARCH USE ONLY (RUO). MUST NOT TO BE USED IN DIAGNOSTIC OR THERAPEUTIC APPLICATIONS.



15% SDS-PAGE (3µg)

SDS-PAGE of recombinant human ELAVL2 protein under reducing conditions Coomassie blue stain