

Human RPL7A protein (Recombinant) (His-Tag) (STJP018976)

GENERAL INFORMATION

Product Type	Proteins
Applications	SDS-PAGE/Denatured
Host / Source	E.coli

PRODUCT PROPERTIES

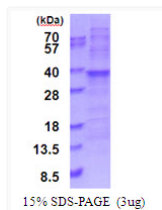
Concentration	1 mg/mL
Formulation	Liquid in 20mM Tris-HCl buffer (pH 8.0) containing 10% Glycerol
Molecular Weight	32.4 kDa
Storage Instruction	For short term storage, keep at +2C to +8C for up to 1 week. For long term storage, aliquot and store at -20C, and avoid repeat freeze-thaw cycles.

TARGET INFORMATION

Gene ID	6130
Gene Symbol	RPL7A
UniProt ID	RL7A_HUMAN
Immunogen Region	1-266aa
Immunogen Sequence	MGSSHHHHHH SSGLVPRGSH MGSMPKGKKA KGKKVAPAPA VVKKQEAKKV VNPLFEKRPK NFGIGQDIQP KRDLTRFVKW PRYIRLQRQR AILYKRLKVP PAINQFTQAL DRQTATQLLK LAHKYRPETK QEKKQRLAR AEKKAAGKGD VPTKRPPVLR AGVNTVTTLV ENKKAQLVVI AHDVDPIELV VFLPALCRKM GVPYCIKGGK ARLGRLVHRK TCTTVAFT

ADDITIONAL INFORMATION

Note STRICTLY FOR FURTHER SCIENTIFIC RESEARCH USE ONLY (RUO). MUST NOT TO BE USED IN DIAGNOSTIC OR THERAPEUTIC APPLICATIONS.



SDS-PAGE gel of recombinant human RPL7A protein under reducing conditions with Coomassie blue stain