

Human BRD2 protein (Recombinant) (His-Tag) (STJP018968)

GENERAL INFORMATION

Product Type	Proteins
Applications	SDS-PAGE
Host / Source	E.coli

PRODUCT PROPERTIES

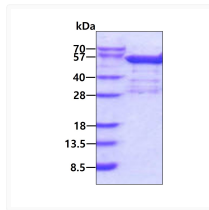
Concentration	1 mg/mL
Formulation	Liquid in phosphate-Buffered Saline (pH 7.4) containing, 10% Glycerol, 1mM DTT
Molecular Weight	52.8 kDa
Storage Instruction	For short term storage, keep at +2C to +8C for up to 1 week. For long term storage, aliquot and store at -20C, and avoid repeat freeze-thaw cycles.

TARGET INFORMATION

Gene ID	6046
Gene Symbol	BRD2
UniProt ID	BRD2_HUMAN
Immunogen Region	1-455aa
Immunogen Sequence	MLQNVTP HNKLPGEENA GLLGLGPEAA APGKRIRKPS LLYEGFESPT MASVPALQLT PANPPPPEVS NPKKPGRVTN QLQYLHKVVM KALWKHQFAW PFRQPVDAVK LGLPDYHKII KQPMDMGTIK RRENNYYWA ASECMQDFNT MFTNCYIYNK PTDDIVLMAQ TLEKIFLQKV ASMPQEEQEL VVTIPKNSHK KGAKLA

ADDITIONAL INFORMATION

Note STRICTLY FOR FURTHER SCIENTIFIC RESEARCH USE ONLY (RUO). MUST NOT TO BE USED IN DIAGNOSTIC OR THERAPEUTIC APPLICATIONS.



Recombinant human BRD2 protein SDS-PAGE gel 3µg reducing conditions Coomassie stain