

Human ARFIP1 protein (Recombinant) (His-Tag) (STJP018918)

GENERAL INFORMATION

Product Type	Proteins
Applications	SDS-PAGE
Host / Source	E.coli

PRODUCT PROPERTIES

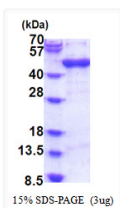
Concentration	0.25 mg/mL
Formulation	Liquid in phosphate-Buffered Saline (pH 7.4) containing 20% Glycerol, 1mM DTT
Molecular Weight	44.1 kDa
Storage Instruction	For short term storage, keep at +2C to +8C for up to 1 week. For long term storage, aliquot and store at-20C, and avoid repeat freeze-thaw cycles.

TARGET INFORMATION

Gene ID	27236
Gene Symbol	ARFIP1
UniProt ID	ARFP1_HUMAN
Immunogen Region	1-373aa
Immunogen Sequence	MGSSHHHHHH SSGLVPRGSH MGSMASQESPK NSAAEIPVTS NGEVDDDSREH SFNRDLKHSL PSGLGLSETQ ITSHGFDNTK EGVIEAGAFQ GSPAPPLPSV MSPSRVAASR LAQQGSDLIV PAGGQRTQTK SGPVILADEI KNPAMEKLEL VRKWSLNTYK CTRQIISEKL GRGSRTVDLE LEAQIDILRD NKKKYENILK LAQTLSTQLF QMVHTQRQLG DAFADLSL

ADDITIONAL INFORMATION

Note STRICTLY FOR FURTHER SCIENTIFIC RESEARCH USE ONLY (RUO). MUST NOT TO BE USED IN DIAGNOSTIC OR THERAPEUTIC APPLICATIONS.



SDS-PAGE gel of recombinant human ARFIP1 protein under reducing conditions stained with Coomassie blue