

Human RAB39B protein (Recombinant) (His-Tag) (STJP018916)

GENERAL INFORMATION

Product Type	Proteins
Applications	SDS-PAGE
Host / Source	E.coli

PRODUCT PROPERTIES

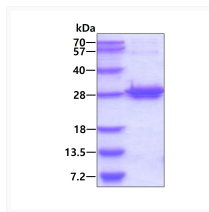
Concentration	0.25 mg/mL
Formulation	Liquid in phosphate-Buffered Saline (pH 7.4) , 30% Glycerol
Molecular Weight	27 kDa
Storage Instruction	For short term storage, keep at +2C to +8C for up to 1 week. For long term storage, aliquot and store at-20C, and avoid repeat freeze-thaw cycles.

TARGET INFORMATION

Gene ID	116442
Gene Symbol	RAB39B
UniProt ID	RB39B_HUMAN
Immunogen Region	1-213aa
Immunogen Sequence	MEAIWL Y QFRLVIGDS TVGKSLIRR FTEGRFAQVS DPTVGVDFFS RLVEIEPGKR IKLQIWDTAG QERFRSITRA YYRNSVGLLL LFDITNRRSF QNVHEWLEET KVHVQPYQIV FVLVGHKCDL DTQRQVTRHE AEKLAAYGM KYIETSARDA INVEKAFTDL TRDIYELVKR GEITIQEGWE GVKSGFV PNV VHSSEE

ADDITIONAL INFORMATION

Note STRICTLY FOR FURTHER SCIENTIFIC RESEARCH USE ONLY (RUO). MUST NOT TO BE USED IN DIAGNOSTIC OR THERAPEUTIC APPLICATIONS.



SDS-PAGE gel of recombinant human RAB39B protein under reducing conditions stained with Coomassie blue