

Human MAK16 protein (Recombinant) (His-Tag) (STJP018915)

GENERAL INFORMATION

Product Type	Proteins
Applications	SDS-PAGE
Host / Source	E.coli

PRODUCT PROPERTIES

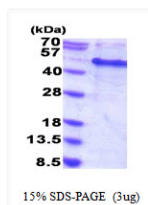
Concentration	0.25 mg/mL
Formulation	Liquid in phosphate-Buffered Saline (pH 7.4) 30% Glycerol, 1mM DTT
Molecular Weight	37.8 kDa
Storage Instruction	For short term storage, keep at +2C to +8C for up to 1 week. For long term storage, aliquot and store at -20C, and avoid repeat freeze-thaw cycles.

TARGET INFORMATION

Gene ID	84549
Gene Symbol	MAK16
UniProt ID	MAK16_HUMAN
Immunogen Region	1-300aa
Immunogen Sequence	MGSSHHHHH SSGLVPRGSH MGSMQSDVI WDTLGNKQFC SFKIRTKTQS FCRNEYSLTG LCNRSSCP LA NSQYATIK EE KGQCYLYMKV IERAAFPRRL WERVRLSKNY EKALEQIDEN LIYWPRFIRH KCKQRFTKIT QYLIRIRKLT LKRQRKLVPL SKKVERREKR REEKALIAAQ LDNAIEKELL ERLKQDTYGD IYNFPIHAFD KALEQQEAE SSSDTEEK

ADDITIONAL INFORMATION

Note STRICTLY FOR FURTHER SCIENTIFIC RESEARCH USE ONLY (RUO). MUST NOT TO BE USED IN DIAGNOSTIC OR THERAPEUTIC APPLICATIONS.



SDS-PAGE gel of recombinant human MAK16 protein under reducing conditions stained with Coomassie blue