

Human NDEL1 protein (Recombinant) (His-Tag) (STJP018886)

GENERAL INFORMATION

Product Type	Proteins
Applications	SDS-PAGE
Host / Source	E.coli

PRODUCT PROPERTIES

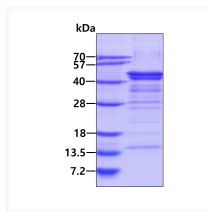
Concentration	0.25 mg/mL
Formulation	Liquid in 20mM Tris-HCl buffer (pH 8.0) containing 0.15M NaCl, 10% Glycerol, 1mM DTT
Molecular Weight	39.4 kDa
Storage Instruction	For short term storage, keep at +2C to +8C for up to 1 week. For long term storage, aliquot and store at -20C, and avoid repeat freeze-thaw cycles.

TARGET INFORMATION

Gene ID	81565
Gene Symbol	NDEL1
UniProt ID	NDEL1_HUMAN
Immunogen Region	1-328aa
Immunogen Sequence	MDGEDIP DFSSLKEETA YWKELSLKYK QSFQEAREDEL VEFQEGSREL EAELEAQLVQ AEQRNRDLQA DNQRLKYEVE ALKEKLEHQY AQSYPQVSVL EDDLSTQTRAI KEQLHKYVRE LEQANDDLER AKRATIVSLE DFEQRLNQAI ERNAFLESEL DEKESLLVSV QRLKDEARDL RQELAVRERQ QEVTRKSAPS SPTLDC

ADDITIONAL INFORMATION

Note STRICTLY FOR FURTHER SCIENTIFIC RESEARCH USE ONLY (RUO). MUST NOT TO BE USED IN DIAGNOSTIC OR THERAPEUTIC APPLICATIONS.



SDS-PAGE gel of recombinant human NDEL1 protein 3µg under reducing conditions stained with Coomassie blue