

## Human COMMD6 protein (Recombinant) (His-Tag) (STJP018865)

### GENERAL INFORMATION

Product Type	Proteins
Applications	SDS-PAGE
Host / Source	E.coli

### PRODUCT PROPERTIES

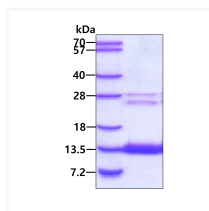
Concentration	1 mg/mL
Formulation	Liquid in 20mM Tris-HCl buffer (pH7.0) containing 20% Glycerol 0.15M NaCl, 1mM DTT
Molecular Weight	12.0 kDa
Storage Instruction	For short term storage, keep at +2C to +8C for up to 1 week. For long term storage, aliquot and store at -20C, and avoid repeat freeze-thaw cycles.

### TARGET INFORMATION

Gene ID	<a href="#">170622</a>
Gene Symbol	<a href="#">COMMD6</a>
UniProt ID	<a href="#">COMD6_HUMAN</a>
Immunogen Region	1-85aa
Immunogen Sequence	MEASSEPLDAKSDVTNQLVDFQWKLGMAVSSDTCRS LKYPYVAVMLKVADHSGQVKTKCFEMTIPQ FQNFYRQFKEIAAVIETV

### ADDITIONAL INFORMATION

Note: STRICTLY FOR FURTHER SCIENTIFIC RESEARCH USE ONLY (RUO). MUST NOT TO BE USED IN DIAGNOSTIC OR THERAPEUTIC APPLICATIONS.



SDS-PAGE gel of recombinant human COMMD6 protein 3µg under reducing conditions Coomassie blue stain