

## Human Crystallin zeta/CRYZ protein (Recombinant) (His-Tag) (STJP018846)

### GENERAL INFORMATION

Product Type	Proteins
Applications	SDS-PAGE
Host / Source	E.coli

### PRODUCT PROPERTIES

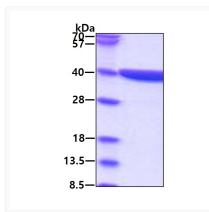
Concentration	0.5 mg/mL
Formulation	Liquid in 20mM Tris-HCl buffer (pH 8.0) containing 0.15M NaCl, 20% Glycerol, 1mM DTT
Molecular Weight	37.6 kDa
Storage Instruction	For short term storage, keep at +2C to +8C for up to 1 week. For long term storage, aliquot and store at -20C, and avoid repeat freeze-thaw cycles.

### TARGET INFORMATION

Gene ID	<a href="#">1429</a>
Gene Symbol	<a href="#">CRYZ</a>
UniProt ID	<a href="#">QOR_HUMAN</a>
Immunogen Region	1-329aa
Immunogen Sequence	MATGQKL MRVAVVFEFG GPEVLKLRSD IAVPIPKDHQ VLIKVHACGV NPVETYIRSG TYSRKPLLPY TPGSDVAGVI EAVGDNASAF KKGDRVFTSS TISGGYAEYA LAADHTVYKL PEKLDFKQGA AIGIPYFTAY RALIHSACVK AGESVLVHGA SGGVGLAACQ IARAYGLKIL GTAGTEEGQK IVLQNGAHEV FNHREV

### ADDITIONAL INFORMATION

Note STRICTLY FOR FURTHER SCIENTIFIC RESEARCH USE ONLY (RUO). MUST NOT TO BE USED IN DIAGNOSTIC OR THERAPEUTIC APPLICATIONS.



SDS-PAGE of recombinant human Crystallin zeta CRYZ protein under reducing conditions