

## Human CLPS protein (Recombinant) (His-Tag) (STJP018769)

### GENERAL INFORMATION

Product Type	Proteins
Applications	SDS-PAGE
Host / Source	E.coli

### PRODUCT PROPERTIES

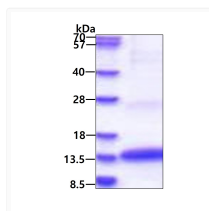
Concentration	0.25 mg/mL
Formulation	Liquid in 20mM Tris-HCl buffer (pH 8.0) containing 30% Glycerol 1mM DTT, 0.1M NaCl
Molecular Weight	12.5 kDa
Storage Instruction	For short term storage, keep at +2C to +8C for up to 1 week. For long term storage, aliquot and store at -20C, and avoid repeat freeze-thaw cycles.

### TARGET INFORMATION

Gene ID	<a href="#">1208</a>
Gene Symbol	<a href="#">CLPS</a>
UniProt ID	<a href="#">COL_HUMAN</a>
Immunogen Region	18-112aa
Immunogen Sequence	APGPRGI IINLENGELC MNSAQCKSN CQHSSALGLA RCTSMASENS ECSVKTYGI YYKPCERGL TCEGDKTIVG SITNTNFGIC HDAGRSKQ

### ADDITIONAL INFORMATION

Note STRICTLY FOR FURTHER SCIENTIFIC RESEARCH USE ONLY (RUO). MUST NOT TO BE USED IN DIAGNOSTIC OR THERAPEUTIC APPLICATIONS.



SDS-PAGE of recombinant human CLPS protein 3µg under reducing conditions with Coomassie blue stain