

Human KRT16 protein (Recombinant) (His-Tag) (STJP018698)

GENERAL INFORMATION

Product Type	Proteins
Applications	SDS-PAGE/Denatured
Host / Source	E.coli

PRODUCT PROPERTIES

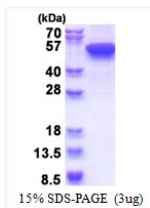
Concentration	1 mg/mL
Formulation	Liquid in 20mM Tris-HCl buffer (pH 8.0) containing 0.4M urea, 10% Glycerol
Molecular Weight	53.7 kDa
Storage Instruction	For short term storage, keep at +2C to +8C for up to 1 week. For long term storage, aliquot and store at -20C, and avoid repeat freeze-thaw cycles.

TARGET INFORMATION

Gene ID	3868
Gene Symbol	KRT16
UniProt ID	K1C16_HUMAN
Immunogen Region	1-473aa
Immunogen Sequence	MGSSHHHHHH SGLVPRGSH MGSMTTC SRQ FTSSSSMKGS CGIGGGIGGG SSRISVLAG GSCRAPSTYG GGLSVSSRF SGGACGLGG YGGGFSSSS FGSGFGGGY GGLGAGFGGG LGAGFGGGFA GGDGLLVGSE KVTMQNLNDR LASYLDK VRA LEEANADLEV KIRDWYQRQR PSEIKDYSPY FKTIEDLRNK IIAATIENAQ PILQIDNARL AADFRTK

ADDITIONAL INFORMATION

Note STRICTLY FOR FURTHER SCIENTIFIC RESEARCH USE ONLY (RUO). MUST NOT TO BE USED IN DIAGNOSTIC OR THERAPEUTIC APPLICATIONS.



SDS-PAGE gel of recombinant human KRT16 protein 3µg reducing conditions Coomassie stain