

## Human Cathepsin E protein (Recombinant) (His-Tag) (STJP018685)

### GENERAL INFORMATION

Product Type	Proteins
Applications	SDS-PAGE/Denatured
Host / Source	E.coli

### PRODUCT PROPERTIES

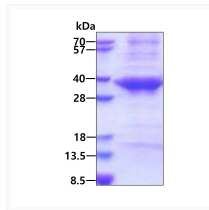
Concentration	1 mg/mL
Formulation	Liquid in 20mM Tris-HCl buffer (pH 8.0) containing 0.4M urea, 10% Glycerol
Molecular Weight	35.4 kDa
Storage Instruction	For short term storage, keep at +2C to +8C for up to 1 week. For long term storage, aliquot and store at -20C, and avoid repeat freeze-thaw cycles.

### TARGET INFORMATION

Gene ID	<a href="#">1510</a>
Gene Symbol	<a href="#">CTSE</a>
UniProt ID	<a href="#">CATE_HUMAN</a>
Immunogen Region	57-363aa
Immunogen Sequence	TESCSMD QSAKEPLINY LDMEYFGTIS IGSPQNFTV IFDTGSSNLW VPSVYCTSPA CKTHSRFQPS QSSTYSQPGQ SFSIQYGTGS LSGIIGADQV SVEGLTVVGQ QFGESVTEPG QTFVDAEFDG ILGLGYPSLA VGGVTPVFDN MMAQNLVDLP MFSVYMSSNP EGGAGSELIF GGYDHSFSG SLNWVVPVKQ AYWQIA

### ADDITIONAL INFORMATION

Note STRICTLY FOR FURTHER SCIENTIFIC RESEARCH USE ONLY (RUO). MUST NOT TO BE USED IN DIAGNOSTIC OR THERAPEUTIC APPLICATIONS.



SDS-PAGE gel of recombinant human Cathepsin E protein under reducing conditions stained with Coomassie blue