

## Human GLYATL2 protein (Recombinant) (His-Tag) (STJP018650)

### GENERAL INFORMATION

Product Type	Proteins
Applications	SDS-PAGE
Host / Source	E.coli

### PRODUCT PROPERTIES

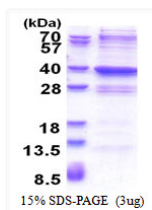
Concentration	0.5 mg/mL
Formulation	Liquid in 20mM Tris-HCl buffer (pH 8.0) containing 0.1M NaCl, 50% Glycerol, 2mM DTT
Molecular Weight	36.7 kDa
Storage Instruction	For short term storage, keep at +2C to +8C for up to 1 week. For long term storage, aliquot and store at -20C, and avoid repeat freeze-thaw cycles.

### TARGET INFORMATION

Gene ID	<a href="#">219970</a>
Gene Symbol	<a href="#">GLYATL2</a>
UniProt ID	<a href="#">GLYL2_HUMAN</a>
Immunogen Region	1-294aa
Immunogen Sequence	MGSSHHHHHH SSGLVPRGSH MGSMLVLHNS QKLQILYKSL EKSIPESIKV YGAIFNIKDK NPFNMEVLVD AWPDYQIVIT RPQKQEMKDD QDHYTNTYHI FTKAPDKLEE VLSYSNVISW EQTLQIQGCQ EGLDEAIRKV ATSKSVQVDY MKTILFIPEL PPKHKHTSSND KMELFEVDDD NKEGNFSNMF LDASHAGLVN EHWAFGKNER SLKYIERCLQ DFLGFGVL

### ADDITIONAL INFORMATION

Note STRICTLY FOR FURTHER SCIENTIFIC RESEARCH USE ONLY (RUO). MUST NOT TO BE USED IN DIAGNOSTIC OR THERAPEUTIC APPLICATIONS.



SDS-PAGE gel of recombinant human GLYATL2 protein under reducing conditions