

Human Chondromodulin/LECT1 protein (Recombinant) (His-Tag) (STJP018623)

GENERAL INFORMATION

Product Type	Proteins
Applications	SDS-PAGE/Denatured
Host / Source	E.coli

PRODUCT PROPERTIES

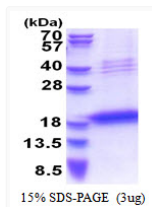
Concentration	1 mg/mL
Formulation	Liquid in 20mM Tris-HCl buffer (pH 8.0) containing 0.4M uREA, 10% Glycerol
Molecular Weight	16.3 kDa
Storage Instruction	For short term storage, keep at +2C to +8C for up to 1 week. For long term storage, aliquot and store at -20C, and avoid repeat freeze-thaw cycles.

TARGET INFORMATION

Gene ID	11061
Gene Symbol	CNMD
UniProt ID	CNMD_HUMAN
Immunogen Region	214-334aa
Immunogen Sequence	MGSSHHHHHH SSGLVPRGSH MGSREVV RKI VPTTTKRP HS GPRSNPGAGR LNNETRPSVQ EDSQAFNPDN PYHQEGESM TFDPRLDHEG ICCIECRRSY THCQKICEPL GGYYPWPYNY QGCRSACRVI MPCSWVARI LGMV

ADDITIONAL INFORMATION

Note STRICTLY FOR FURTHER SCIENTIFIC RESEARCH USE ONLY (RUO). MUST NOT TO BE USED IN DIAGNOSTIC OR THERAPEUTIC APPLICATIONS.



SDS-PAGE gel of recombinant human Chondromodulin LECT1 protein under reducing conditions