

Human LZIC protein (Recombinant) (His-Tag) (STJP018606)

GENERAL INFORMATION

Product Type	Proteins
Applications	SDS-PAGE
Host / Source	E.coli

PRODUCT PROPERTIES

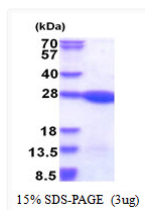
Concentration	1 mg/mL
Formulation	Liquid in 20mM Tris-HCl buffer (pH 8.0) containing 10% Glycerol
Molecular Weight	23.9 kDa
Storage Instruction	For short term storage, keep at +2C to +8C for up to 1 week. For long term storage, aliquot and store at -20C, and avoid repeat freeze-thaw cycles.

TARGET INFORMATION

Gene ID	84328
Gene Symbol	LZIC
UniProt ID	LZIC_HUMAN
Immunogen Region	1-190aa
Immunogen Sequence	MGSSHHHHHH SSGLVPRGSH MGSMASRGKT ETSKLLKQNLE EQLDRLMQQL QDLEECREEL DTDEYEETKK ETLEQLSEFN DSLKKIMSGN MTLVDELSGM QLAIQAASQ AFKTPVIRL FAKKQPGQLR TRLAEMDRDL MVGKLERDLY TQQKVEILTA LRKLGEKLT A DDEAFLSANA GAILSQFEKV STDLGSGDKI LALASFEVEK TKK

ADDITIONAL INFORMATION

Note STRICTLY FOR FURTHER SCIENTIFIC RESEARCH USE ONLY (RUO). MUST NOT TO BE USED IN DIAGNOSTIC OR THERAPEUTIC APPLICATIONS.



SDS-PAGE gel of recombinant human LZIC protein under reducing conditions stained with Coomassie blue