

Human NSDHL protein (Recombinant) (His-Tag) (STJP018560)

GENERAL INFORMATION

Product Type	Proteins
Applications	SDS-PAGE
Host / Source	E.coli

PRODUCT PROPERTIES

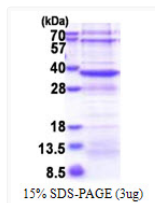
Concentration	0.25 mg/mL
Formulation	Liquid in 20mM Tris-HCl buffer (pH 8.0) containing 10% Glycerol 0.1M NaCl
Molecular Weight	35.5 kDa
Storage Instruction	For short term storage, keep at +2C to +8C for up to 1 week. For long term storage, aliquot and store at -20C, and avoid repeat freeze-thaw cycles.

TARGET INFORMATION

Gene ID	50814
Gene Symbol	NSDHL
UniProt ID	NSDHL_HUMAN
Immunogen Region	1-297aa
Immunogen Sequence	MGSSHHHHH SSSLVPRGSH MGSMEPAVSE PMRDQVARTH LTEDTPKVNA DIEKVNQNA KRCTVIGGSG FLGQHMVEQL LARGYAVNVF DIQQGFDNPQ VRFFLDLCS RQDLYPALKG VNTVFHCASP PPSSNNKELF YRVNYIGTKN VIETCKEAGV QKLILTSSAS VIFEGVDIKN GTEDLPYAMK PIDYYTETKI LQERAVLGAN DPEKNFLT TA IRPHGIFG

ADDITIONAL INFORMATION

Note STRICTLY FOR FURTHER SCIENTIFIC RESEARCH USE ONLY (RUO). MUST NOT TO BE USED IN DIAGNOSTIC OR THERAPEUTIC APPLICATIONS.



SDS-PAGE gel of recombinant human NSDHL protein under reducing conditions