

Human GOLM1 protein (Recombinant) (His-Tag) (STJP018530)

GENERAL INFORMATION

Product Type	Proteins
Applications	SDS-PAGE
Host / Source	E.coli

PRODUCT PROPERTIES

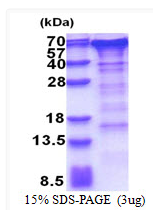
Concentration	0.5 mg/mL
Formulation	Liquid in 20mM Tris-HCl buffer (pH 8.0) containing 0.1M NaCl, 20% Glycerol, 1mM DTT
Molecular Weight	44 kDa
Storage Instruction	For short term storage, keep at +2C to +8C for up to 1 week. For long term storage, aliquot and store at -20C, and avoid repeat freeze-thaw cycles.

TARGET INFORMATION

Gene ID	51280
Gene Symbol	GOLM1
UniProt ID	GOLM1_HUMAN
Immunogen Region	36-401aa
Immunogen Sequence	MGSSHHHHHH SSGLVPRGSH MGSSSRSDVL QTRIMELEGR VRRAAAERGA VELKKNEFQG ELEKQREQLD KIQSSHNFLQ ESVNKLYQDE KAVLVNNTT GERLIRVLQD QLKTLQRNYG RLQQDVLQFQ KNQTNLERKF SYDLSQCINQ MKEVKEQCEE RIEEVTKKGN EAVASRDLSE NNDQRQQLQA LSEPQPRLQA AGLPHTVEVPQ GKGNVVGNSK SQTPAPSS

ADDITIONAL INFORMATION

Note STRICTLY FOR FURTHER SCIENTIFIC RESEARCH USE ONLY (RUO). MUST NOT TO BE USED IN DIAGNOSTIC OR THERAPEUTIC APPLICATIONS.



SDS-PAGE gel of recombinant human GOLM1 protein under reducing conditions Coomassie blue stain