

Human KHDC1L protein (Recombinant) (His-Tag) (STJP018458)

GENERAL INFORMATION

Product Type	Proteins
Applications	SDS-PAGE
Host / Source	E.coli

PRODUCT PROPERTIES

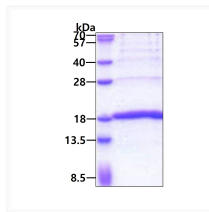
Concentration	0.25 mg/mL
Formulation	Liquid in 20mM Tris-HCl buffer (pH 8.0) containing 0.2M NaCl, 50% Glycerol, 2mM DTT
Molecular Weight	16.9 kDa
Storage Instruction	For short term storage, keep at +2C to +8C for up to 1 week. For long term storage, aliquot and store at -20C, and avoid repeat freeze-thaw cycles.

TARGET INFORMATION

Gene ID	100129128
Gene Symbol	KHDC1L
UniProt ID	KHDCL_HUMAN
Immunogen Region	1-128aa
Immunogen Sequence	MAVGTSA LSKEPWWTLP ENFHSPMVFH MEEDQEELIF GLDDTYLRIC ELHSHTLIQL ERCFTATGQT RVTVVGPPMA KQWLLLMFHC VGSQDSKCHA RGLKMLERVR SQLPTNDDL V TSVSLPPYTG D

ADDITIONAL INFORMATION

Note STRICTLY FOR FURTHER SCIENTIFIC RESEARCH USE ONLY (RUO). MUST NOT TO BE USED IN DIAGNOSTIC OR THERAPEUTIC APPLICATIONS.



SDS-PAGE gel of recombinant human KHDC1L protein under reducing conditions with Coomassie blue stain