

Human JSRP1 protein (Recombinant) (His-Tag) (STJP018442)

GENERAL INFORMATION

Product Type	Proteins
Applications	SDS-PAGE
Host / Source	E.coli

PRODUCT PROPERTIES

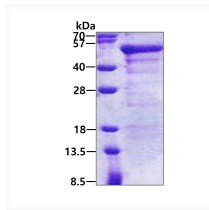
Concentration	0.25 mg/mL
Formulation	Liquid in 20mM Tris-HCl buffer (pH 8.0) containing 0.15M NaCl, 10% Glycerol
Molecular Weight	38 kDa
Storage Instruction	For short term storage, keep at +2C to +8C for up to 1 week. For long term storage, aliquot and store at -20C, and avoid repeat freeze-thaw cycles.

TARGET INFORMATION

Gene ID	126306
Gene Symbol	JSRP1
UniProt ID	JSRP1_HUMAN
Immunogen Region	1-331aa
Immunogen Sequence	MSMTTRA WEELDGGGLGS CQALEDHSAL AETQEDRASA TPRLADSGSV PHDSQVAEGP SVDTRPKKME KEPAARGTPG TGKERLKAGA SPRSPARKK AQTAPPLQPP PPPPALSEEL PWGDLSLNKC LVLASLVALL GSAFQLCRDA VPGEAALQAR VPEPWVPPSS APREPSSPLP KFEAQAPPSA PPAPRAEAEV RPKIPG

ADDITIONAL INFORMATION

Note STRICTLY FOR FURTHER SCIENTIFIC RESEARCH USE ONLY (RUO). MUST NOT TO BE USED IN DIAGNOSTIC OR THERAPEUTIC APPLICATIONS.



SDS-PAGE gel of recombinant human JSRP1 protein under reducing conditions with Coomassie blue staining