

## Human KIAA0101/PCLAF protein (Recombinant) (His-Tag) (STJP018407)

### GENERAL INFORMATION

|               |          |
|---------------|----------|
| Product Type  | Proteins |
| Applications  | SDS-PAGE |
| Host / Source | E.coli   |

### PRODUCT PROPERTIES

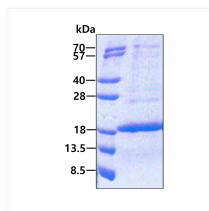
|                     |   |
|---------------------|---|
| Concentration       | 0.5 mg/mL   |
| Formulation         | Liquid in 20mM Tris-HCl buffer (pH 8.0) containing 0.15M NaCl, 10% Glycerol, 1mM DTT  |
| Molecular Weight    | 14.4 kDa  |
| Storage Instruction | For short term storage, keep at +2C to +8C for up to 1 week. For long term storage, aliquot and store at -20C, and avoid repeat freeze-thaw cycles. |

### TARGET INFORMATION

|                    |  |
|--------------------|--|
| Gene ID            | <a href="#">9768</a>   |
| Gene Symbol        | <a href="#">PCLAF</a>  |
| UniProt ID         | <a href="#">PAF15_HUMAN</a>  |
| Immunogen Region   | 1-111aa  |
| Immunogen Sequence | MVRTKAD SVPGTYRKVV AARAPRKVLG SSTSATNSTS VSSRKAENKY AGGNPVCVRP TPKWQKGIGE FFRLSPKDSE KENQIPEEAG SSGLGKAKRK ACPLQPDHTN DEKE |

### ADDITIONAL INFORMATION

Note STRICTLY FOR FURTHER SCIENTIFIC RESEARCH USE ONLY (RUO). MUST NOT TO BE USED IN DIAGNOSTIC OR THERAPEUTIC APPLICATIONS.



SDS-PAGE gel showing recombinant human KIAA0101 PCLAF protein 3ug under reducing conditions Coomassie blue stain