

Human RPL30 protein (Recombinant) (His-Tag) (STJP018377)

GENERAL INFORMATION

Product Type	Proteins
Applications	SDS-PAGE
Host / Source	E.coli

PRODUCT PROPERTIES

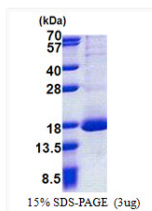
Concentration	0.25 mg/mL
Formulation	Liquid in 20mM Tris-HCl buffer (pH 8.0) containing 0.2M NaCl, 40% Glycerol, 2mM DTT
Molecular Weight	15.2 kDa
Storage Instruction	For short term storage, keep at +2C to +8C for up to 1 week. For long term storage, aliquot and store at -20C, and avoid repeat freeze-thaw cycles.

TARGET INFORMATION

Gene ID	6156
Gene Symbol	RPL30
UniProt ID	RL30_HUMAN
Immunogen Region	1-115aa
Immunogen Sequence	MGSSHHHHHH SSSLVPRGSH MGSMVAAKKT KKSLESINSR LQLVMKSGKY VLGKQTLKM IRQGKAKLVI LANNCPALRK SEIEYYAMLA KTGVMHHYSGN NIELGTACGK YYRVCTLAII DPGDSDIIRS MPEQTGEK

ADDITIONAL INFORMATION

Note STRICTLY FOR FURTHER SCIENTIFIC RESEARCH USE ONLY (RUO). MUST NOT TO BE USED IN DIAGNOSTIC OR THERAPEUTIC APPLICATIONS.



SDS-PAGE gel of recombinant human RPL30 protein 3µg reducing conditions Coomassie blue