

Human MED21 protein (Recombinant) (His-Tag) (STJP018225)

GENERAL INFORMATION

Product Type	Proteins
Applications	SDS-PAGE
Host / Source	E.coli

PRODUCT PROPERTIES

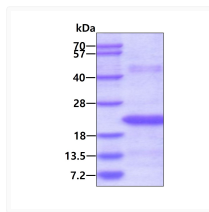
Concentration	0.5 mg/mL
Formulation	Liquid in 20mM Tris-HCl buffer (pH 8.0) containing 0.15M NaCl, 10% Glycerol, 1mM DTT
Molecular Weight	18 kDa
Storage Instruction	For short term storage, keep at +2C to +8C for up to 1 week. For long term storage, aliquot and store at -20C, and avoid repeat freeze-thaw cycles.

TARGET INFORMATION

Gene ID	9412
Gene Symbol	MED21
UniProt ID	MED21_HUMAN
Immunogen Region	1-144aa
Immunogen Sequence	MADRLTQ LQDAVNSLAD QFCNAIGVLQ QCGPPASFNN IQTAINKDQP ANPTEEYAQL FAALIARTAK DIDVLIDSLP SEESTAALQA ASLYKLEEN HEATCLEDV VYRGDMLLEK IQSALADIAQ SQLKTRSGTH SQSLPDS

ADDITIONAL INFORMATION

Note STRICTLY FOR FURTHER SCIENTIFIC RESEARCH USE ONLY (RUO). MUST NOT TO BE USED IN DIAGNOSTIC OR THERAPEUTIC APPLICATIONS.



SDS-PAGE of recombinant human MED21 protein under reducing conditions stained with Coomassie blue