

Human TOMM20 protein (Recombinant) (His-Tag) (STJP018219)

GENERAL INFORMATION

Product Type	Proteins
Applications	SDS-PAGE
Host / Source	E.coli

PRODUCT PROPERTIES

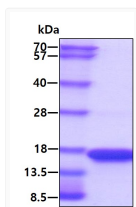
Concentration	0.5 mg/mL
Formulation	Liquid in 20mM Tris-HCl buffer (pH 8.0) containing 0.1M NaCl, 20% Glycerol, 2mM DTT
Molecular Weight	16.2 kDa
Storage Instruction	For short term storage, keep at +2C to +8C for up to 1 week. For long term storage, aliquot and store at -20C, and avoid repeat freeze-thaw cycles.

TARGET INFORMATION

Gene ID	9804
Gene Symbol	TOMM20
UniProt ID	TOM20_HUMAN
Immunogen Region	25-145aa
Immunogen Sequence	DRKRRSD PNFKNRLRER RKKQKLAKER AGLSKLPDLK DAEAVQKFFL EEIQLGEELL AQGEYEKGV D HLTNAIAVCG QPQQLQLVQ QTLPPPVFQM LLTKLPTISQ RIVSAQSLAE DDVE

ADDITIONAL INFORMATION

Note STRICTLY FOR FURTHER SCIENTIFIC RESEARCH USE ONLY (RUO). MUST NOT TO BE USED IN DIAGNOSTIC OR THERAPEUTIC APPLICATIONS.



SDS-PAGE gel of recombinant human TOMM20 protein under reducing conditions stained with Coomassie blue