

## Human EHF protein (Recombinant) (His-Tag) (STJP018166)

### GENERAL INFORMATION

Product Type	Proteins
Applications	SDS-PAGE/Denatured
Host / Source	E.coli

### PRODUCT PROPERTIES

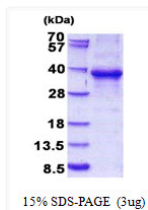
Concentration	1 mg/mL
Formulation	Liquid in 20mM Tris-HCl buffer (pH 8.0) containing 0.4M urea, 10% Glycerol
Molecular Weight	37.3 kDa
Storage Instruction	For short term storage, keep at +2C to +8C for up to 1 week. For long term storage, aliquot and store at -20C, and avoid repeat freeze-thaw cycles.

### TARGET INFORMATION

Gene ID	<a href="#">26298</a>
Gene Symbol	<a href="#">EHF</a>
UniProt ID	<a href="#">EHF_HUMAN</a>
Immunogen Region	1-300aa
Immunogen Sequence	MGSSHHHHHH SSSLVPRGSH MGSMILEGGG VMNLNPGNNL LHQPPAWTDS YSTCNVSSGF FGGQWHEIHP QYWTKYQVWE WLQHLLDTNQ LDANCIPFQE FDINGEHLCS MSLQEFTRAA GTAGQLLYSN LQHLKWNGQC SSDLFQSTHN VIVKTEQTEP SIMNTWKDEN YLYDTNYGST VDLLDSKTFC RAQISM TTTT HLPVAESPDM KKEQDPPAKC HTKKHNPR

### ADDITIONAL INFORMATION

Note STRICTLY FOR FURTHER SCIENTIFIC RESEARCH USE ONLY (RUO). MUST NOT TO BE USED IN DIAGNOSTIC OR THERAPEUTIC APPLICATIONS.



15% SDS-PAGE (3µg)

SDS-PAGE gel of recombinant human EHF protein under reducing conditions stained with Coomassie blue