

Human PRDC/GREM2 protein (Recombinant) (His-Tag) (STJP018156)

GENERAL INFORMATION

Product Type	Proteins
Applications	SDS-PAGE/Denatured
Host / Source	E.coli

PRODUCT PROPERTIES

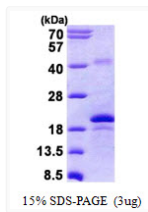
Concentration	1 mg/mL
Formulation	Liquid in 20mM Tris-HCl buffer (pH 8.0) containing 0.4M urea, 10% Glycerol
Molecular Weight	19 kDa
Storage Instruction	For short term storage, keep at +2C to +8C for up to 1 week. For long term storage, aliquot and store at -20C, and avoid repeat freeze-thaw cycles.

TARGET INFORMATION

Gene ID	64388
Gene Symbol	GREM2
UniProt ID	GREM2_HUMAN
Immunogen Region	22-168aa
Immunogen Sequence	MGSSHHHHHH SGLVPRGSH MGSRKNRPAG AIPSPYKDGS SNNSERWQHQ IKEVLASSQE ALVVTERKYL KSDWCKTQPL RQTVSEEGCR SRTILNRFY GQCNSFYIPR HVKKEEESFQ SCAFCKPQRV TSLVLELECP GLDPPFRLKK IQKVKQCRGM SVNLSDSKQ

ADDITIONAL INFORMATION

Note STRICTLY FOR FURTHER SCIENTIFIC RESEARCH USE ONLY (RUO). MUST NOT TO BE USED IN DIAGNOSTIC OR THERAPEUTIC APPLICATIONS.



SDS-PAGE gel of recombinant human PRDC GREM2 protein under reducing conditions