

Human RNA polymerases I, II, and III subunit RPABC1/POLR2E protein (Recombinant) (His-Tag) (STJP017950)

GENERAL INFORMATION

Product Type	Proteins
Applications	SDS-PAGE
Host / Source	E.coli

PRODUCT PROPERTIES

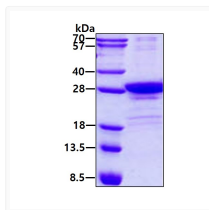
Concentration	1 mg/mL
Formulation	Liquid in 20mM Tris-HCl buffer (pH 8.0) containing 0.1M NaCl, 10% Glycerol, 1mM DTT
Molecular Weight	27 kDa
Storage Instruction	For short term storage, keep at +2C to +8C for up to 1 week. For long term storage, aliquot and store at-20C, and avoid repeat freeze-thaw cycles.

TARGET INFORMATION

Gene ID	5434
Gene Symbol	POLR2E
UniProt ID	RPAB1_HUMAN
Immunogen Region	1-210aa
Immunogen Sequence	MDDEEET YRLWKIRKTI MQLCHDRGYL VTQDELDQTL EEFKAQFGDK PSEGRPRRTD LTVLVAHNDD PTDQMFVFFP EEPKVGIKTI KVYCQRMQEE NITRALIVVQ QGMTPSAKQS LVDMPKYIL EQFLQQELLI NITEHELVE HVVMTKEEVT ELLARYKLRE NQLPRIQAGD PVARYFGIKR GQVVKIIRPS ETAGRY

ADDITIONAL INFORMATION

Note	STRICTLY FOR FURTHER SCIENTIFIC RESEARCH USE ONLY (RUO). MUST NOT TO BE USED IN DIAGNOSTIC OR THERAPEUTIC APPLICATIONS.
------	---



SDS-PAGE gel of recombinant human RPABC1 POLR2E protein under reducing conditions