

Human LIN-7C protein (Recombinant) (His-Tag) (STJP017944)

GENERAL INFORMATION

Product Type	Proteins
Applications	SDS-PAGE
Host / Source	E.coli

PRODUCT PROPERTIES

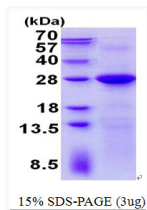
Concentration	0.5 mg/mL
Formulation	Liquid in 20mM Tris-HCl buffer (pH 8.0) containing 0.2M NaCl, 30% Glycerol
Molecular Weight	24.2 kDa
Storage Instruction	For short term storage, keep at +2C to +8C for up to 1 week. For long term storage, aliquot and store at -20C, and avoid repeat freeze-thaw cycles.

TARGET INFORMATION

Gene ID	55327
Gene Symbol	LIN7C
UniProt ID	LIN7C_HUMAN
Immunogen Region	1-197aa
Immunogen Sequence	MGCSHHHHH SSSLVPRGSH MGSMAALGEP VRLERDICRA IELLEKLQRS GEVPPQKLQA LQRVLQSEFC NAVREVEYEHV YETVDISSSP EVRANATAKA TVAAFAASEG HSHPRVVELP KTEEGLGFNI MGGKEQNSPI YISRIPGGI ADRHGGLKRG DQLLSVNGVS VEGEHHEKAV ELLKAAQGV KLVVRYTPKV LEEMESRFEK MRSAKRRQQT

ADDITIONAL INFORMATION

Note STRICTLY FOR FURTHER SCIENTIFIC RESEARCH USE ONLY (RUO). MUST NOT TO BE USED IN DIAGNOSTIC OR THERAPEUTIC APPLICATIONS.



SDS-PAGE gel of recombinant human LIN-7C protein under reducing conditions